

P r e c i s i o n A i r C h u c k s

NORTHFIELD

WHERE TO FIND IT

	Page
Custom Jaws	2
Special Devices	2
Ordering Information	2
3" (76mm) Chucks	3-4
4" (100mm) Chucks	4-7
6" (150mm) Chucks	7-11
7" (178mm) Chucks	11
8" (203mm) Chucks	12
10" (254mm) Chucks	12-13
12" (305mm) Chucks	13
Standard Jaws	14-15
Warranty	16

NORTHFIELD

PRECISION INSTRUMENT CORPORATION

4400 Austin Blvd., P.O. Box 550, Island Park, NY 11558-0550 • (516) 431-1112 • Fax: (516) 431-1928

Call Toll Free 1-800-810-2482

www.northfield.com • e-mail: sales@northfield.com

NORTHFIELD the world leader in precision workholding air chucks.

Guaranteed accuracy from 0.0001" (2.5 μ) to 0.000010" (0.25 μ)

Applications

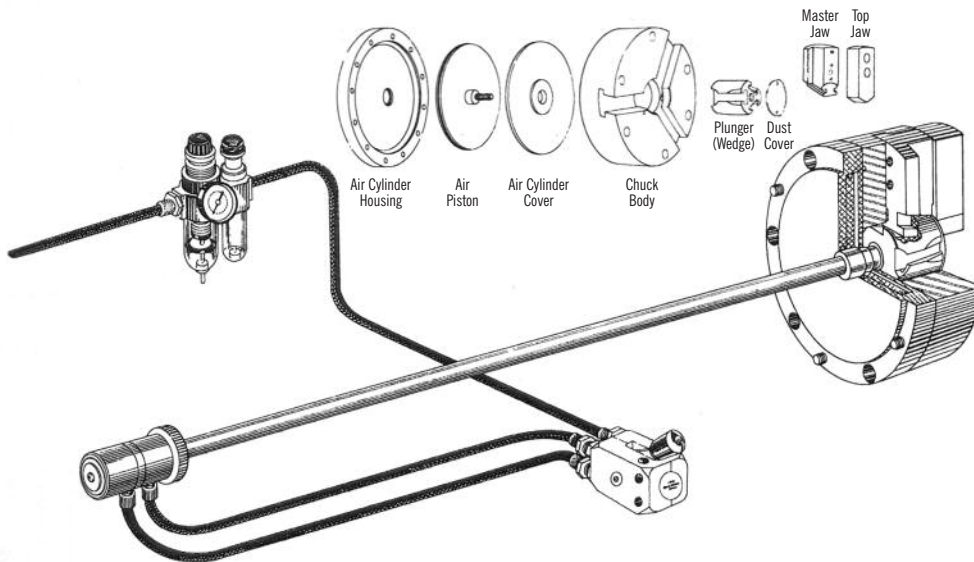
- Turning, grinding, boring, milling, measuring, inspection, material handling, robotics, CNC, EDM.
- All machines: rotating, stationary, vertical, horizontal.
- Universal workholding: internal, external, thin-wall, rigid.

Productivity

- Finger-tip control can triple output.
- Extremely simple loading/unloading. No indicating or adjusting. Can be used by unskilled operators.
- Automatic self-centering.
- Uniform pre-determined holding pressure.
- Adjustable jaw force for semi-rough or fragile holding.
- Automatic or manual operation.

Reliability

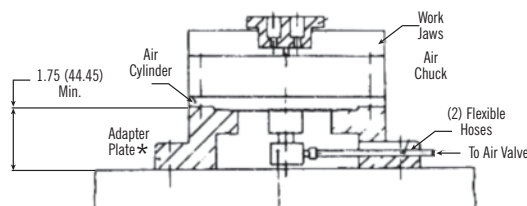
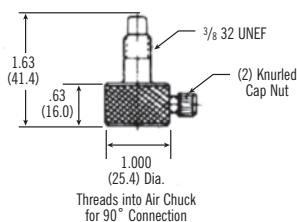
- Rotary joint air bearing eliminates metal-to-metal wear for extremely long life.
- Simple, sophisticated design: only four metal-to-metal parts in chuck: hardened center wedge; three master jaws.
- Materials: Meehanite body; steel master jaws; hardened steel center wedge.
- Balanced to operate at high speeds.
- Built-in, self-contained air cylinder.
- Built-in safety features.



The Precision Workholding Source

- Workholding leadership in accuracy, reliability, repeatability, concentricity and productivity.
- Chuck sizes: 3" (76mm) to 12" (305mm).
- "Coolant-thru" models.
- Precision top jaws shipped same day.
- Custom-designed jaw tooling service. Special jaws engineered and manufactured to your drawings or workpieces.
- Engineered workholding consultation services.

Standard for all non-rotating Northfield chucks mounted on milling machines, jig borers and all vertical spindles.



Optional Side Ports Available.

* Not Supplied. Available at extra cost.

NORTHFIELD

U.S. AND METRIC

All dimensions and weights listed in this catalog are in U.S. and (metric) equivalents.

ORDERING INFORMATION

To fit the custom-made air tube to your machine, we need:

- (1) I.D. of the spindle's rear. Within .002" (.051 mm).
- (2) Overall length of the spindle.
- (3) I.D. of the spindle's bore at midpoint for spindles over 25 inches (635mm) in length.

TERMS: Net 30 days, F.O.B. Island Park, NY Accessories Available

- Air Tube Assemblies.
- Manual Operating Valve.
- Adapter plate - machined to your spindle nose configuration.
- Stationary fixture plates.
- Air pressure regulator, filter, lubricator.
- Side-mounted air ports for lower stationary chuck profile.
- Replacement top jaws (specify Model # from pages 14 and 15).
- Quick disconnects.



CUSTOM DESIGNED WORKHOLDING JAWS

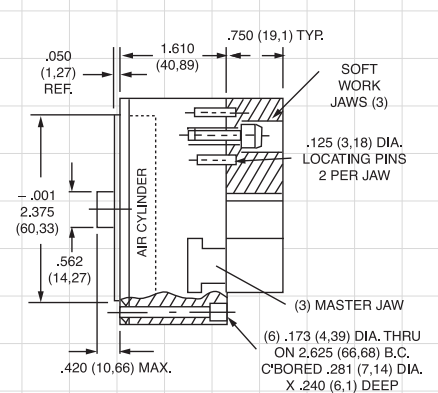
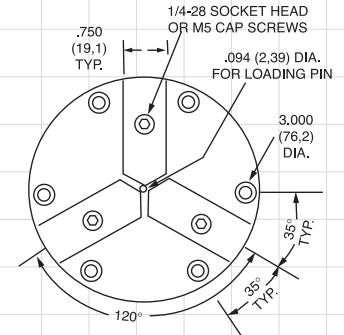
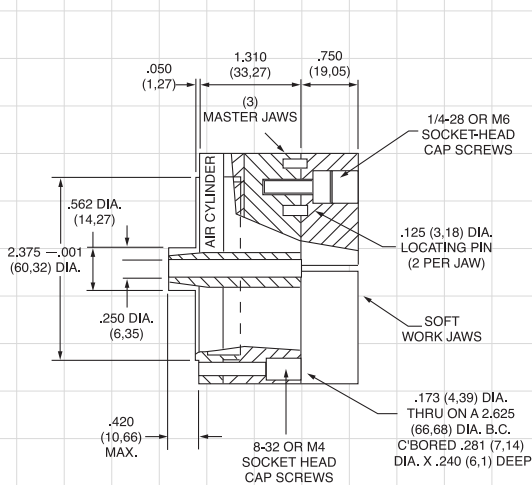
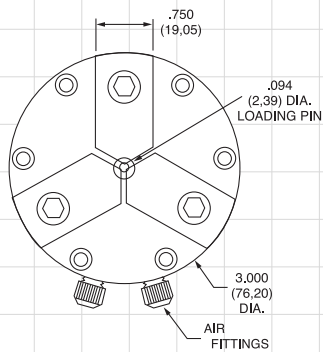
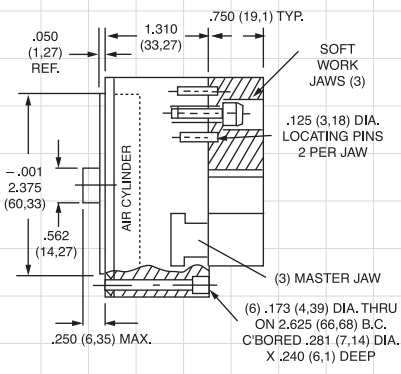
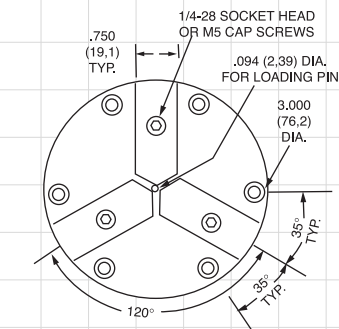
Top jaws are a critical part of a precision workholding system. The same attention must be paid to jaw design and manufacture as to chuck and machine performance if maximum accuracy is to be achieved at the workpiece. Northfield's experienced workholding engineers and specialized manufacturing facilities provide a unique capability for the design and manufacture of custom jaws.

Based on customer drawings or workpieces, we design jaws to hold the most intricate or fragile parts. The appropriate material is used - from hardened and ground tool steel through aluminum DELRIN® plastic and serrated diamond points. Jaws are created internal/external, thin-wall/rigid, over-the-shoulder, and hundreds of other unique solutions to exactly meet each workholding requirement to bring gauge block accuracy to your production pieces.

SPECIAL DEVICES FOR INCREASED PRODUCTIVITY

Quality and productivity are improved by specialized tooling produced by Northfield. Among the workholding products we design and manufacture are devices for parts ejection, coolant direction, chip blow-off, robotic loading/unloading, locating tooling, stand-offs and chuck redesign for special applications.

In most cases, quotations for these engineering services are free.



MODEL 300

3 Inch • 3 Jaw (.020" opening)
(76mm) (0.51mm opening)

Model 300 Air Chuck comes complete including air tube assembly and one set of #AL-1-3-3/4 aluminum top jaws.

Body class 80 ductile cast iron

Master Jaws hardened steel

Wedge hardened steel

Air Cylinder aluminum, o-ring sealed

Top Jaws located on hardened steel pins in master jaws & secured by socket head cap screws

Weight

with aluminum jaws: 2 lbs. (.91 kg)

with steel jaws: 2 1/2 lbs. (1.14 kg)

Max. Recommended RPM 4200

Max. Opening of Jaws .020" (0.51mm) on diameter

Force per Jaw variable to 316 lbs. (144 kg)

Repeatability

concentricity—.0001 (2.5μ) T.I.R. max

end lengths—.0001 (2.5μ) T.I.R. max

Also available with .000010"

(10 millionths) (2.5μ) repeatability

Master Jaws move at perfect right angle to ϕ of spindle

MODEL 300THS

3 Inch • 3 Jaw (.020" opening)
(76mm) (0.51mm opening)

1/4" (6.35mm) Through Hole Stationary

Model 300THS Air Chuck comes with sideports, air hoses, valve and one set of #AL-1-3-3/4 aluminum top jaws.

Body class 80 ductile cast iron

Master Jaws hardened steel

Wedge hardened steel

Air Cylinder aluminum, o-ring sealed

Top Jaws located on hardened steel pins in master jaws & secured by socket head cap screws

Weight

with aluminum jaws: 2 lbs. (.91 kg)

with steel jaws: 2 1/2 lbs. (1.14 kg)

Max. Opening of Jaws .020" (0.51mm) on diameter

Force per Jaw variable to 316 lbs. (144 kg)

Repeatability

concentricity—.0001 (2.5μ) T.I.R. max

end lengths—.0001 (2.5μ) T.I.R. max

Also available with .000010"

(10 millionths) (2.5μ) repeatability

Master Jaws move at perfect right angle to ϕ of spindle

MODEL 350

3 Inch • 3 Jaw (.060" opening)
(76mm) (1.5mm opening)

Model 350 Air Chuck comes complete including air tube assembly and one set of #AL-1-3-3/4 aluminum top jaws.

Body class 80 ductile cast iron

Master Jaws hardened steel

Wedge hardened steel

Air Cylinder aluminum, o-ring sealed

Top Jaws located on hardened steel pins in master jaws & secured by socket head cap screws

Weight

with aluminum jaws: 2 1/2 lbs. (1.14 kg)

with steel jaws: 2 7/8 lbs. (1.31 kg)

Max. Recommended RPM 4200

Max. Opening of Jaws .060" (1.5mm) on diameter

Force per Jaw variable to 316 lbs. (144 kg)

Repeatability

concentricity—.0001 (2.5μ) T.I.R. max

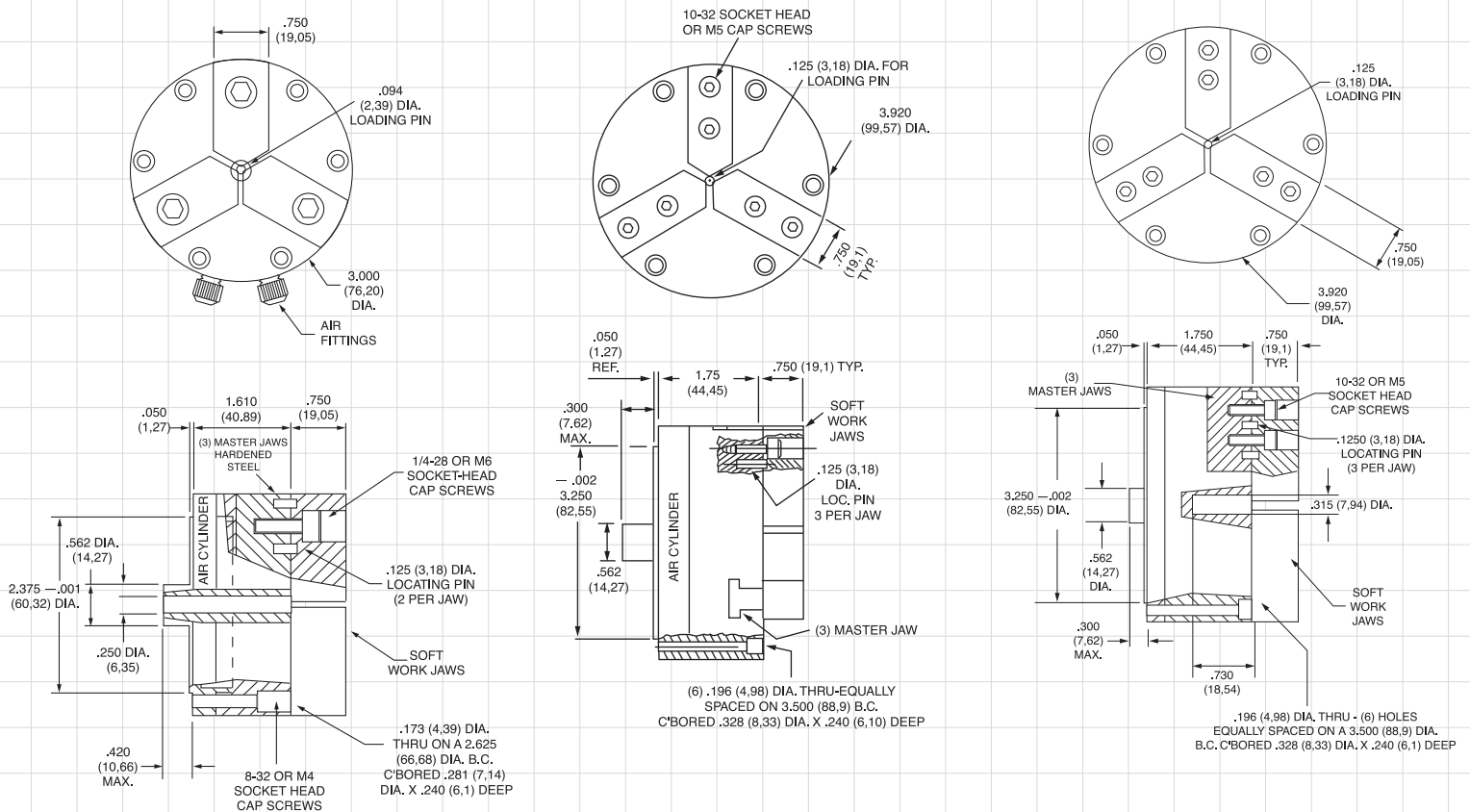
end lengths—.0001 (2.5μ) T.I.R. max

Also available with .000010"

(10 millionths) (2.5μ) repeatability

Master Jaws move at perfect right angle to ϕ of spindle

NORTHFIELD



MODEL 350THS

3 Inch • 3 Jaw (.060" opening)

(76mm) (1.5mm opening)

$\frac{1}{4}$ " (6.35mm) Through Hole Stationary

Model 350THS Air Chuck comes with sideports, air hoses, valve and one set of #AL-1-3- $\frac{3}{4}$ aluminum top jaws.

Body class 80 ductile cast iron

Master Jaws hardened steel

Wedge hardened steel

Air Cylinder aluminum, o-ring sealed

Top Jaws located on hardened steel pins in master jaws

& secured by socket head cap screws

Weight

with aluminum jaws: 2 $\frac{1}{2}$ lbs. (1.14 kg)

with steel jaws: 2 $\frac{7}{8}$ lbs. (1.31 kg)

Max. Opening of Jaws .060" (1.5mm) on diameter

Force per Jaw variable to 316 lbs. (144 kg)

Repeatability

concentricity—.0001 (2.5 μ) T.I.R. max

end lengths—.0001 (2.5 μ) T.I.R. max

Also available with .000010"

(10 millionths) (2.5 μ) repeatability

Master Jaws move at perfect right angle to ϕ of spindle

MODEL 400

4 Inch • 3 Jaw (.027" opening)

(100mm) (.69mm opening)

Model 400 Air Chuck comes complete including air tube assembly and one set of #AL-1-4- $\frac{3}{4}$ aluminum top jaws.

Body class 80 ductile cast iron

Master Jaws hardened steel

Wedge hardened steel

Air Cylinder aluminum, o-ring sealed

Top Jaws located on hardened steel pins in master jaws

& secured by socket head cap screws

Weight

with aluminum jaws: 4 $\frac{3}{4}$ lbs. (2.16 kg)

with steel jaws: 5 $\frac{1}{4}$ lbs. (2.39 kg)

Max. Recommended RPM 3000

Max. Opening of Jaws .027" (0.69mm) on diameter

Force per Jaw variable to 625 lbs. (284 kg)

Repeatability

concentricity—.0001 (2.5 μ) T.I.R. max

end lengths—.0001 (2.5 μ) T.I.R. max

Also available with .000010"

(10 millionths) (2.5 μ) repeatability

Master Jaws move at perfect right angle to ϕ of spindle

MODEL 400CB

4 Inch • 3 Jaw (.027" opening)

(100mm) (.69mm opening)

$\frac{5}{16}$ " (7.94) counterbore .73 (18.54) deep

Model 400CB Air Chuck comes complete including air tube assembly and one set of #AL-1-4- $\frac{3}{4}$ aluminum top jaws.

Body class 80 ductile cast iron

Master Jaws hardened steel

Wedge hardened steel

Air Cylinder aluminum, o-ring sealed

Top Jaws located on hardened steel pins in master jaws &

secured by socket head cap screws

Weight

with aluminum jaws: 4 $\frac{3}{4}$ lbs. (2.16 kg)

with steel jaws: 5 $\frac{1}{4}$ lbs. (2.39 kg)

Max. Recommended RPM 3000

Max. Opening of Jaws .027" (0.69mm) on diameter

Force per Jaw variable to 625 lbs. (284 kg)

Repeatability

concentricity—.0001 (2.5 μ) T.I.R. max

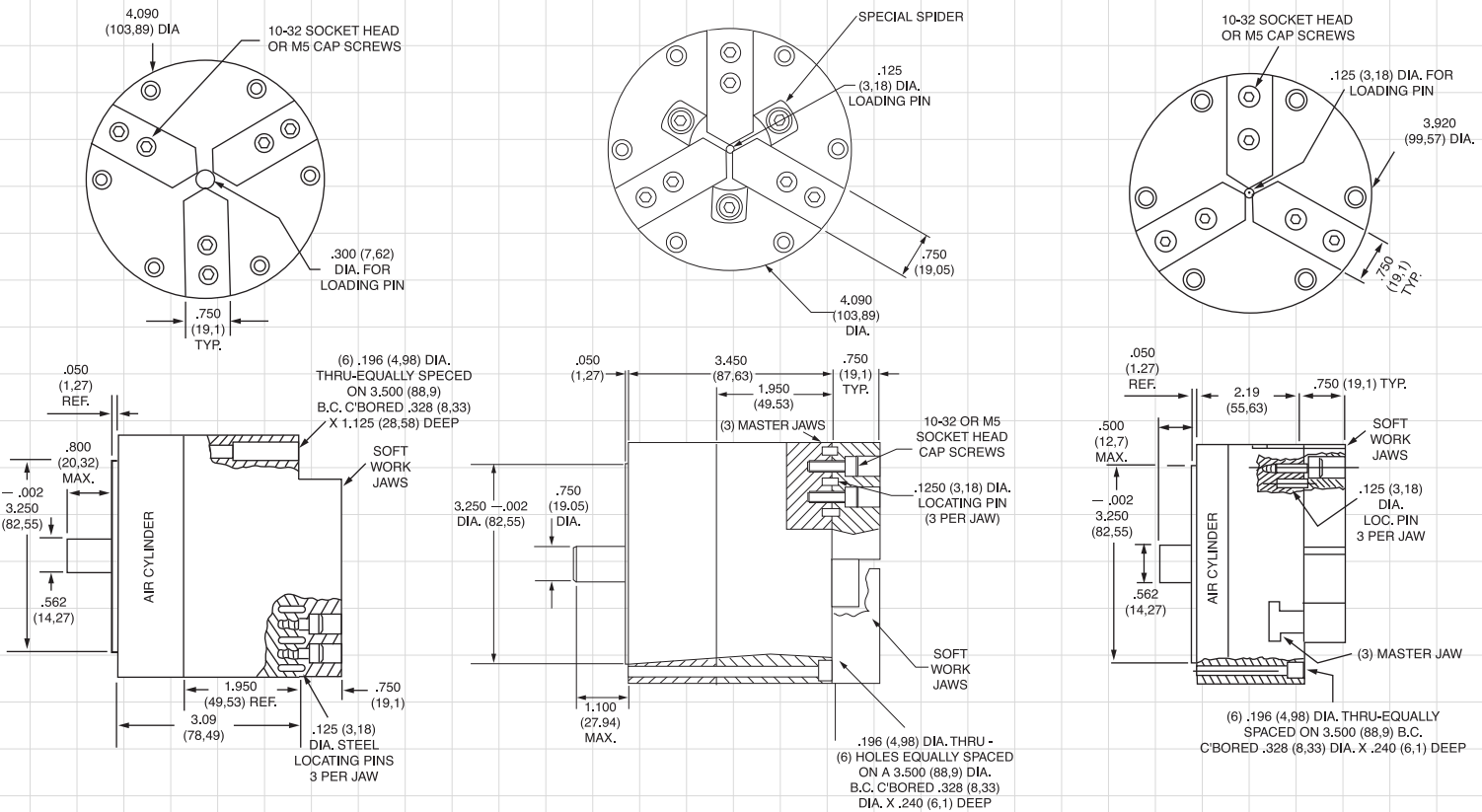
end lengths—.0001 (2.5 μ) T.I.R. max

Also available with .000010"

(10 millionths) (2.5 μ) repeatability

Master Jaws move at perfect right angle to ϕ of spindle

Precision Air Chucks Guarantee Accuracy within Millionths



MODEL 425

4 Inch • 3 Jaw (.250" opening)
(104mm) (6.35mm opening)

Model 425 Air Chuck comes complete including air tube assembly and one set of #AL-1-4-³/₄ aluminum top jaws.

Body class 80 ductile cast iron

Master Jaws hardened steel

Wedge hardened steel

Air Cylinder aluminum and stainless steel, o-ring sealed

Top Jaws located on hardened steel pins in master jaws & secured by socket head cap screws

Weight

with aluminum jaws: 7½ lbs. (3.41 kg)

with steel jaws: 8 lbs. (3.64 kg)

Max. Recommended RPM 3000

Max. Opening of Jaws .250" (6.35mm) on diameter

Force per Jaw variable to 645 lbs. (293 kg)

Repeatability

concentricity—.0001 (2.5μ) T.I.R. max

end lengths—.0001 (2.5μ) T.I.R. max

Also available with .000025"

(25 millionths) (.64μ) repeatability

Master Jaws move at perfect right angle to ϕ of spindle

MODEL 437

4 Inch • 3 Jaw (.375" opening)
(100mm) (9.53mm opening)

Model 437 Air Chuck comes complete including air tube assembly and one set of #AL-1-4-³/₄ aluminum top jaws.

Body class 80 ductile cast iron

Master Jaws hardened steel

Wedge hardened steel

Air Cylinder aluminum, o-ring sealed

Top Jaws located on hardened steel pins in master jaws & secured by socket head cap screws

Weight

with aluminum jaws: 7½ lbs. (3.41 kg)

with steel jaws: 8 lbs. (3.64 kg)

Max. Recommended RPM 3000

Max. Opening of Jaws .375" (9.53mm) on diameter

Force per Jaw variable to 625 lbs. (284 kg)

Repeatability

concentricity—.0001 (2.5μ) T.I.R. max

end lengths—.0001 (2.5μ) T.I.R. max

Also available with .000025"

(25 millionths) (.64μ) repeatability

Master Jaws move at perfect right angle to ϕ of spindle

MODEL 450

4 Inch • 3 Jaw (.100" opening)
(100mm) (2.5mm opening)

Model 450 Air Chuck comes complete including air tube assembly and one set of #AL-1-4-³/₄ aluminum top jaws.

Body class 80 ductile cast iron

Master Jaws hardened steel

Wedge hardened steel

Air Cylinder aluminum and stainless steel, o-ring sealed

Top Jaws located on hardened steel pins in master jaws & secured by socket head cap screws

Weight

with aluminum jaws: 5¾ lbs. (2.61 kg)

with steel jaws: 6¼ lbs. (2.84 kg)

Max. Recommended RPM 3000

Max. Opening of Jaws .100" (2.5mm) on diameter

Force per Jaw variable to 625 lbs. (284 kg)

Repeatability

concentricity—.0001 (2.5μ) T.I.R. max

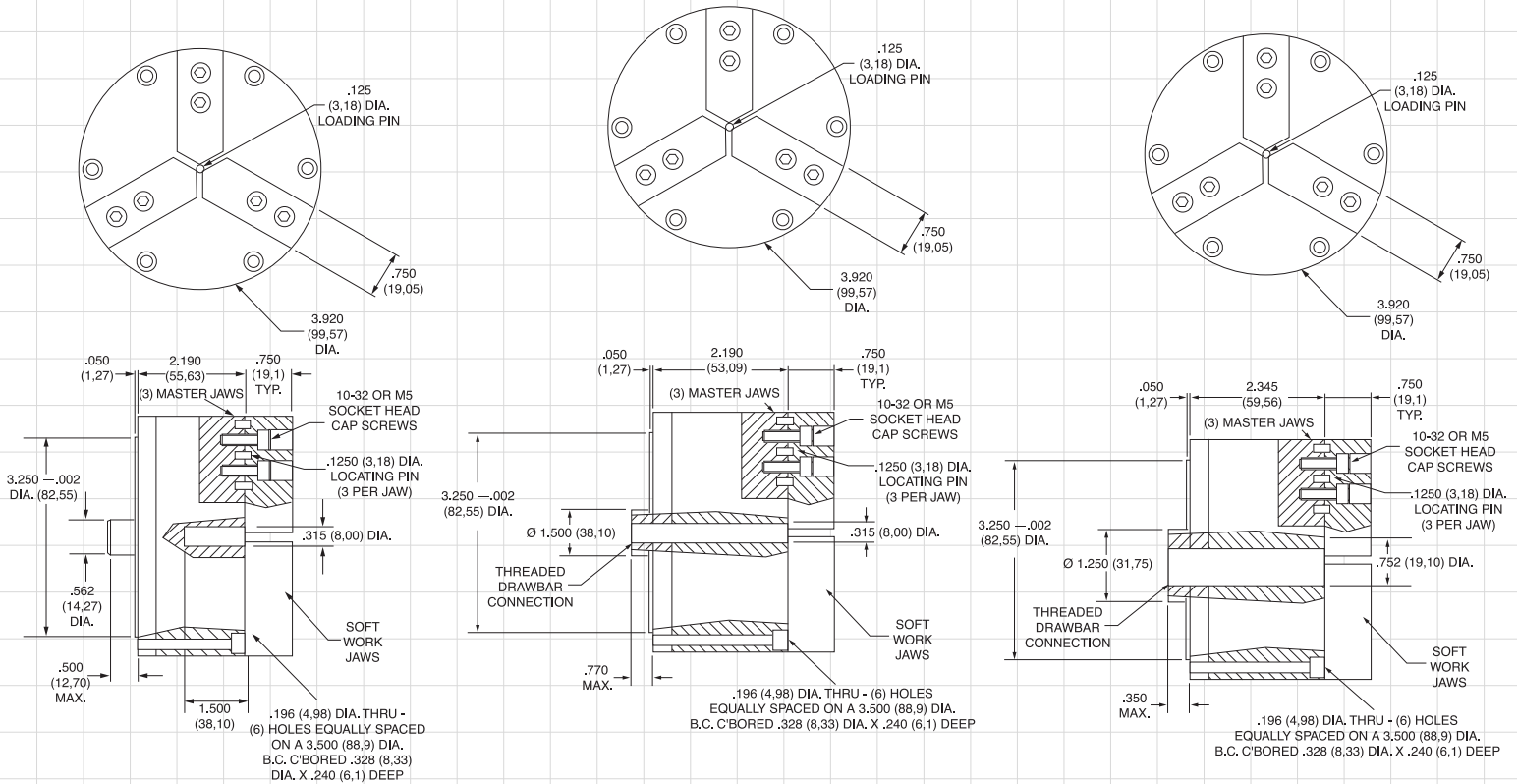
end lengths—.0001 (2.5μ) T.I.R. max

Also available with .000025"

(25 millionths) (.64μ) repeatability

Master Jaws move at perfect right angle to ϕ of spindle

NORTHFIELD



MODEL

450CB

4 Inch • 3 Jaw (.100" opening)

(100mm) (2.5mm opening)

⁵/₁₆" (8.00mm) counterbore 1¹/₂" (38.1) deep

Model 450CB Air Chuck comes complete including air tube assembly and one set of #AL-1-4-³/₄ aluminum top jaws.

Body class 80 ductile cast iron

Master Jaws hardened steel

Wedge hardened steel

Air Cylinder aluminum, o-ring sealed

Top Jaws located on hardened steel pins in master jaws & secured by socket head cap screws

Weight

with aluminum jaws: 5³/₄ lbs. (2.61 kg)

with steel jaws: 6¹/₄ lbs. (2.84 kg)

Max. Recommended RPM 3000

Max. Opening of Jaws .100" (2.54mm) on diameter

Force per Jaw variable to 625 lbs. (284 kg)

Repeatability

concentricity—.0001 (2.5 μ) T.I.R. max

end lengths—.0001 (2.5 μ) T.I.R. max

Also available with .000025"

(25 millionths) (.64 μ) repeatability

Master Jaws move at perfect right angle to ϕ of spindle

MODEL

450THR516

4 Inch • 3 Jaw (.100" opening)

(100mm) (2.5mm opening)

⁵/₁₆" (8.00mm) Through Hole Rotating

Model 450THR516 Air Chuck comes with one set of #AL-1-4-³/₄ aluminum top jaws.

Body class 80 ductile cast iron

Master Jaws hardened steel

Wedge hardened steel

Air Cylinder aluminum, o-ring sealed

Top Jaws located on hardened steel pins in master jaws & secured by socket head cap screws

Weight

with aluminum jaws: 5³/₄ lbs. (2.61 kg)

with steel jaws: 6¹/₄ lbs. (2.84 kg)

Max. Recommended RPM 3000

Max. Opening of Jaws .100" (2.54mm) on diameter

Force per Jaw variable to 625 lbs. (284 kg)

Repeatability

concentricity—.0001 (2.5 μ) T.I.R. max

end lengths—.0001 (2.5 μ) T.I.R. max

Also available with .000025"

(25 millionths) (.64 μ) repeatability

Master Jaws move at perfect right angle to ϕ of spindle

Requires Rear Mounted Actuator

MODEL

450THR750

4 Inch • 3 Jaw (.100" opening)

(100mm) (2.5mm opening)

³/₄" (19.10mm) Through Hole Rotating

Model 450THR750 Air Chuck comes with one set of #AL-1-4-³/₄ aluminum top jaws.

Body class 80 ductile cast iron

Master Jaws hardened steel

Wedge hardened steel

Air Cylinder aluminum, o-ring sealed

Top Jaws located on hardened steel pins in master jaws & secured by socket head cap screws

Weight

with aluminum jaws: 5³/₄ lbs. (2.61 kg)

with steel jaws: 6¹/₄ lbs. (2.84 kg)

Max. Recommended RPM 3000

Max. Opening of Jaws .100" (2.54mm) on diameter

Force per Jaw variable to 625 lbs. (284 kg)

Repeatability

concentricity—.0001 (2.5 μ) T.I.R. max

end lengths—.0001 (2.5 μ) T.I.R. max

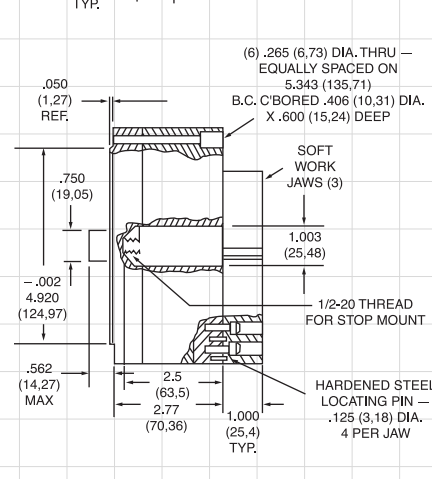
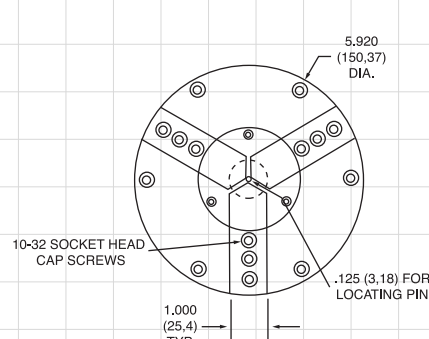
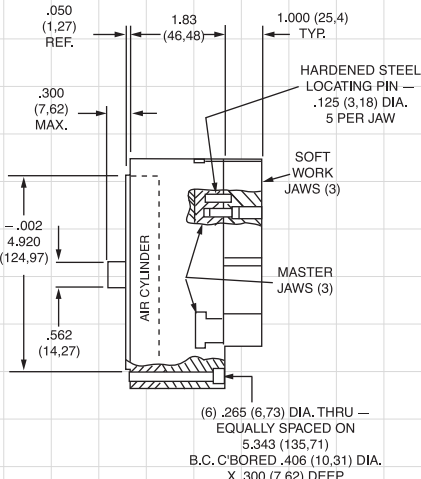
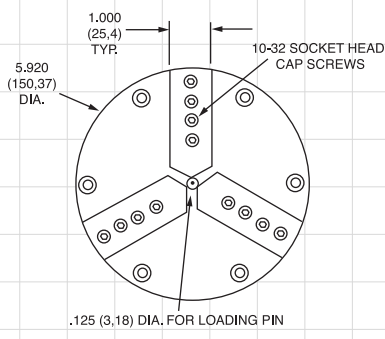
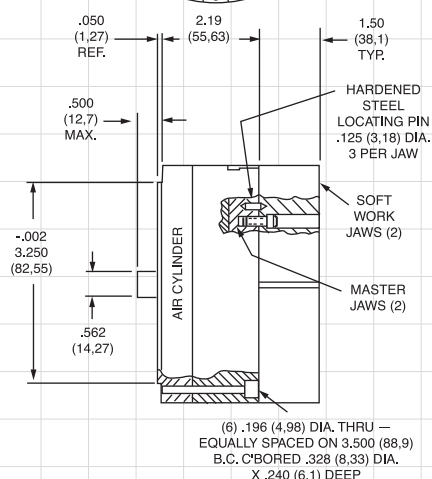
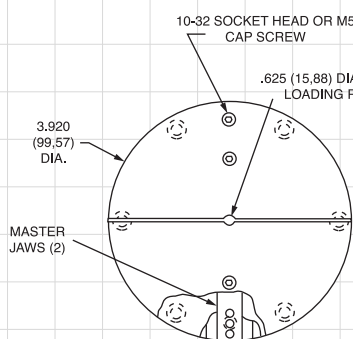
Also available with .000025"

(25 millionths) (.64 μ) repeatability

Master Jaws move at perfect right angle to ϕ of spindle

Requires Rear Mounted Actuator

Precision Air Chucks Guarantee Accuracy within Millionths



MODEL 470

4 Inch • 2 Jaw (.100" opening)
(100mm) (2.5mm opening)

Model 470 Air Chuck comes complete including air tube assembly and one set of #AL-2-4-1½ aluminum top jaws.

Body class 80 ductile cast iron

Master Jaws hardened steel

Wedge hardened steel

Air Cylinder aluminum and stainless steel, o-ring sealed, incorporated into the chuck body

Top Jaws located on hardened steel pins in master jaws & secured by socket head cap screws

Weight

with aluminum jaws: 6½ lbs. (2.88 kg)

with steel jaws: 7½ lbs. (3.41 kg)

Max. Recommended RPM 3000

Max. Opening of Jaws .100" (2.5mm) on diameter

Force per Jaw variable to 938 lbs. (426 kg)

Repeatability

concentricity—.0001 (2.5μ) T.I.R. max

Master Jaws move at perfect right angle to ϕ of spindle

MODEL 600

6 Inch • 3 Jaw (.027" opening)
(150mm) (.69mm opening)

Model 600 Air Chuck comes complete including air tube assembly and one set of #AL-1-6-1 aluminum top jaws.

Body class 80 ductile cast iron

Master Jaws hardened steel

Wedge hardened steel

Air Cylinder aluminum, o-ring sealed, incorporated into the chuck body

Top Jaws located on hardened steel pins in master jaws & secured by socket head cap screws

Weight

with aluminum jaws: 11½ lbs. (5.15 kg)

with steel jaws: 12 lbs. (5.45 kg)

Max. Recommended RPM 3000

Max. Opening of Jaws .027" (.69mm) on diameter

Force per Jaw variable to 988 lbs. (449 kg)

Repeatability

concentricity—.0001 (2.5μ) T.I.R. max

end lengths—.0001 (2.5μ) T.I.R. max

Also available with .000025" (25 millionths) (.64μ) repeatability

Master Jaws move at perfect right angle to ϕ of spindle

MODEL 620CB

6 Inch • 3 Jaw (.100" opening)
(150mm) (2.5mm opening)
1" (25.4mm) counterbore ½" (63.5) deep

Model 620CB Air Chuck comes complete including air tube assembly and one set of #AL-1-6-1 aluminum top jaws.

Body class 80 ductile cast iron

Master Jaws hardened steel

Wedge hardened steel

Air Cylinder aluminum and stainless steel, o-ring sealed

Top Jaws located on hardened steel pins in master jaws & secured by socket head cap screws

Weight

with aluminum jaws: 16½ lbs. (7.39 kg)

with steel jaws: 17 lbs. (7.73 kg)

Max. Recommended RPM 3000

Max. Opening of Jaws .100" (2.5mm) on diameter

Force per Jaw variable to 1200 lbs. (545 kg)

Repeatability

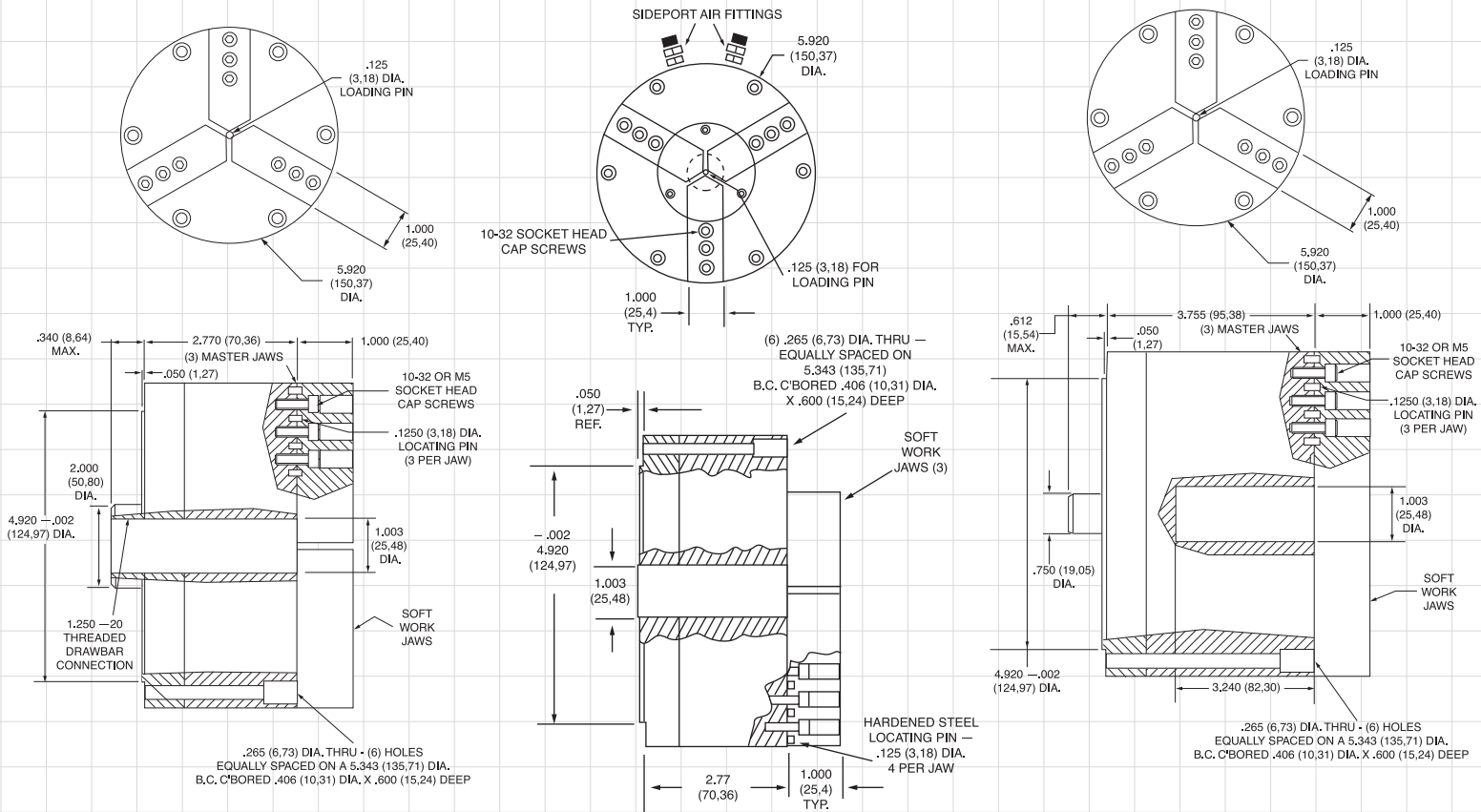
concentricity—.0001 (2.5μ) T.I.R. max

end lengths—.0001 (2.5μ) T.I.R. max

Also available with .000025" (25 millionths) (.64μ) repeatability

Master Jaws move at perfect right angle to ϕ of spindle

NORTHFIELD



MODEL 620THR

6 Inch • 3 Jaw (.100" opening)
(150mm) (2.5mm opening)
1" (25.48mm) Through Hole Rotating

Model 620THR Air Chuck comes with one set of #AL-1-6-1 aluminum top jaws.

Body class 80 ductile cast iron

Master Jaws hardened steel

Wedge hardened steel

Air Cylinder aluminum, o-ring sealed

Top Jaws located on hardened steel pins in master jaws & secured by socket head cap screws

Weight

with aluminum jaws: 16 $\frac{1}{4}$ lbs. (7.39 kg)

with steel jaws: 17 lbs. (7.73 kg)

Max. Recommended RPM 3000

Max. Opening of Jaws .100" (2.54 mm) on diameter

Force per Jaw variable to 1200 lbs. (545 kg)

Repeatability

concentricity—.0001 (2.5 μ) T.I.R. max

end lengths—.0001 (2.5 μ) T.I.R. max

Also available with .000025"

(25 millionths) (.64 μ) repeatability

Master Jaws move at perfect right angle to

ϕ of spindle

Requires Rear Mounted Actuator

MODEL 620THS

6 Inch • 3 Jaw (.100" opening)
(150mm) (2.5mm opening)
1" (25.48mm) Through Hole Stationary

Model 620THS Air Chuck comes with sideports, air hoses, valve and one set of #AL-1-6-1 aluminum top jaws.

Body class 80 ductile cast iron

Master Jaws hardened steel

Wedge hardened steel

Air Cylinder aluminum and stainless steel, o-ring sealed

Top Jaws located on hardened steel pins in master jaws & secured by socket head cap screws

Weight

with aluminum jaws: 16 $\frac{1}{4}$ lbs. (7.39 kg)

with steel jaws: 17 lbs. (7.73 kg)

Max. Recommended RPM 3000

Max. Opening of Jaws .100" (2.54 mm) on diameter

Force per Jaw variable to 1200 lbs. (545 kg)

Repeatability

concentricity—.0001 (2.5 μ) T.I.R. max

end lengths—.0001 (2.5 μ) T.I.R. max

Also available with .000025"

(25 millionths) (.64 μ) repeatability

Master Jaws move at perfect right angle to

ϕ of spindle

MODEL 625CB

6 Inch • 3 Jaw (.250" opening)
(150mm) (2.5mm opening)
1" (25.48mm) counterbore 3.24" (82.3) deep

Model 625CB Air Chuck comes complete including one set of #AL-1-6-1 aluminum top jaws.

Body class 80 ductile cast iron

Master Jaws hardened steel

Wedge hardened steel

Air Cylinder aluminum, o-ring sealed

Top Jaws located on hardened steel pins in master jaws & secured by socket head cap screws

Weight

with aluminum jaws: 16 $\frac{1}{4}$ lbs. (7.39 kg)

with steel jaws: 17 lbs. (7.73 kg)

Max. Recommended RPM 3000

Max. Opening of Jaws .250" (6.4mm) on diameter

Force per Jaw variable to 1200 lbs. (545 kg)

Repeatability

concentricity—.0001 (2.5 μ) T.I.R. max

end lengths—.0001 (2.5 μ) T.I.R. max

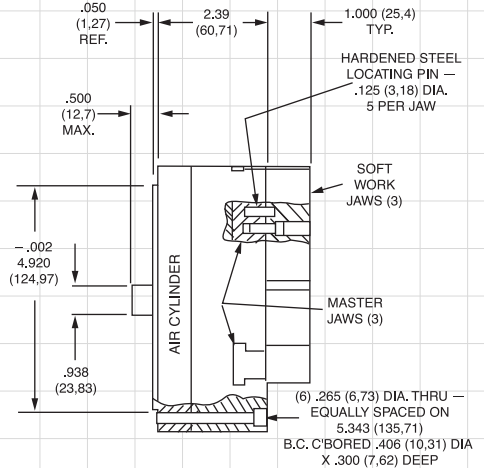
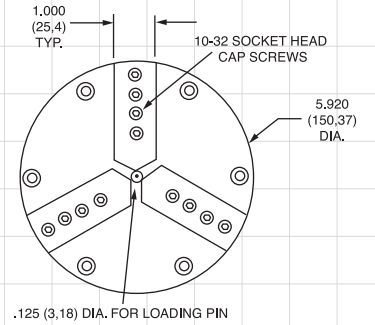
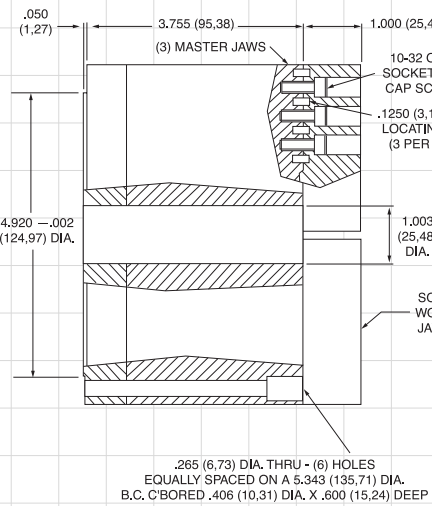
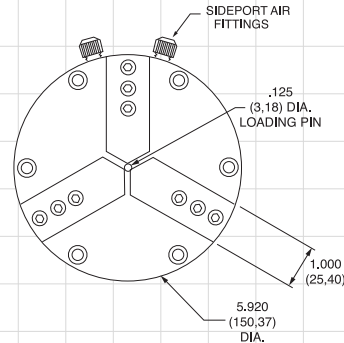
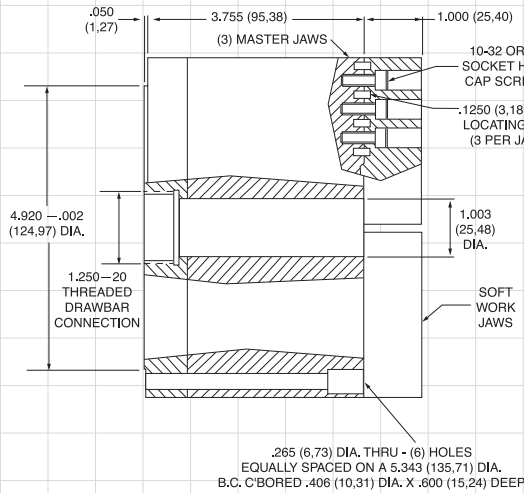
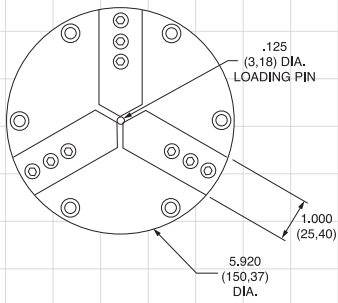
Also available with .000025"

(25 millionths) (.64 μ) repeatability

Master Jaws move at perfect right angle to

ϕ of spindle

Precision Air Chucks Guarantee Accuracy within Millionths



MODEL

625THR

6 Inch • 3 Jaw (.250" opening)

(150mm) (6.35mm opening)

1" (25.48mm) Through Hole Rotating

Model 625THR Air Chuck comes with one set of #AL-1-6-1 aluminum top jaws.

Body class 80 ductile cast iron

Master Jaws hardened steel

Wedge hardened steel

Air Cylinder aluminum, o-ring sealed

Top Jaws located on hardened steel pins in master jaws & secured by socket head cap screws

Weight

with aluminum jaws: 16 $\frac{1}{4}$ lbs. (7.39 kg)

with steel jaws: 17 lbs. (7.73 kg)

Max. Recommended RPM 3000

Max. Opening of Jaws .250" (6.35 mm) on diameter

Force per Jaw variable to 1200 lbs. (545 kg)

Repeatability

concentricity—.0001 (2.5 μ) T.I.R. max

end lengths—.0001 (2.5 μ) T.I.R. max

Also available with .000025"

(25 millionths) (.64 μ) repeatability

Master Jaws move at perfect right angle to

ϕ of spindle

Requires Rear Mounted Actuator

MODEL

625THS

6 Inch • 3 Jaw (.250" opening)

(150mm) (6.35mm opening)

1" (25.48mm) Through Hole Rotating

Model 625THS Air Chuck comes with sideports, air hoses, valve and one set of #AL-1-6-1 aluminum top jaws.

Body class 80 ductile cast iron

Master Jaws hardened steel

Wedge hardened steel

Air Cylinder aluminum, o-ring sealed

Top Jaws located on hardened steel pins in master jaws & secured by socket head cap screws

Weight

with aluminum jaws: 16 $\frac{1}{4}$ lbs. (7.39 kg)

with steel jaws: 17 lbs. (7.73 kg)

Max. Opening of Jaws .250" (6.4 mm) on diameter

Force per Jaw variable to 1200 lbs. (545 kg)

Repeatability

concentricity—.0001 (2.5 μ) T.I.R. max

end lengths—.0001 (2.5 μ) T.I.R. max

Also available with .000025"

(25 millionths) (.64 μ) repeatability

Master Jaws move at perfect right angle to

ϕ of spindle

MODEL

650

6 Inch • 3 Jaw (.100" opening)

(150mm) (2.5mm opening)

Model 650 Air Chuck comes complete including air tube assembly and one set of #AL-1-6-1 aluminum top jaws.

Body class 80 ductile cast iron

Master Jaws hardened steel

Wedge hardened steel

Air Cylinder aluminum and stainless steel, o-ring sealed

Top Jaws located on hardened steel pins in master jaws & secured by socket head cap screws

Weight

with aluminum jaws: 14 $\frac{1}{8}$ lbs. (6.42 kg)

with steel jaws: 14 $\frac{7}{8}$ lbs. (6.76 kg)

Max. Recommended RPM 3000

Max. Opening of Jaws .100" (2.5mm) on diameter

Force per Jaw variable to 988 lbs. (449 kg)

Repeatability

concentricity—.0001 (2.5 μ) T.I.R. max

end lengths—.0001 (2.5 μ) T.I.R. max

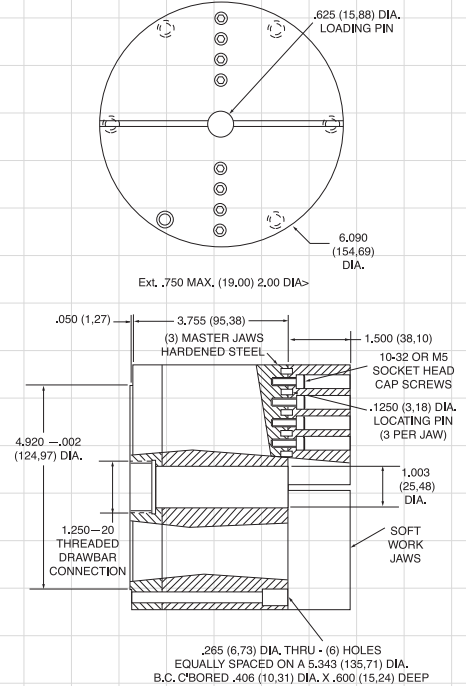
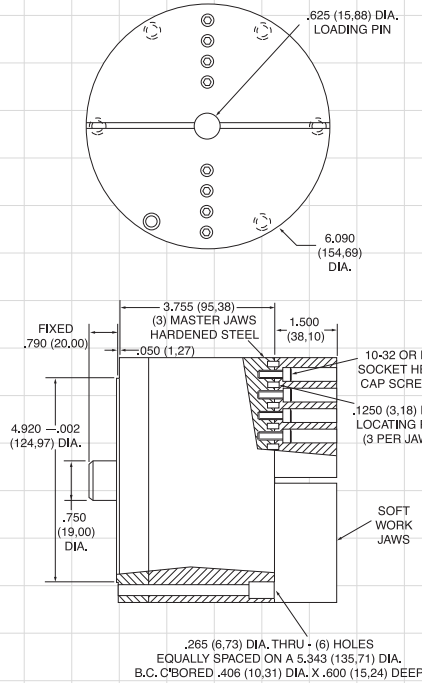
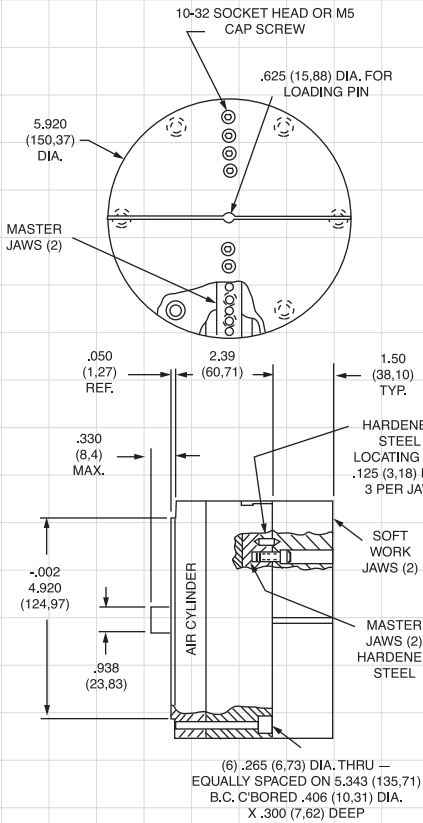
Also available with .000025"

(25 millionths) (.64 μ) repeatability

Master Jaws move at perfect right angle to

ϕ of spindle

NORTHFIELD



MODEL 670

6 Inch • 2 Jaw (.100" opening)
 (150mm) (2.5mm opening)

Model 670 Air Chuck comes complete including air tube assembly and one set of #AL-2-6-1½ aluminum top jaws.

Body class 80 ductile cast iron

Master Jaws hardened steel

Wedge hardened steel

Air Cylinder aluminum and stainless steel, o-ring sealed

Top Jaws located on hardened steel pins in master jaws & secured by socket head cap screws

Weight

with aluminum jaws: 14 lbs. (6.36 kg)

with steel jaws: 19 lbs. (8.64 kg)

Max. Recommended RPM 3000

Max. Opening of Jaws .100" (2.5mm) on diameter

Force per Jaw variable to 1482 lbs. (674 kg)

Repeatability

concentricity—.0001 (2.5μ) T.I.R. max

end lengths—.0001 (2.5μ) T.I.R. max

Master Jaws move at perfect right angle to ϕ of spindle

MODEL 675

6 Inch • 2 Jaw (.250" opening)
 (150mm) (6.35mm opening)

Model 675 Air Chuck comes complete including air tube assembly and one set of #AL-1-6-1½ aluminum top jaws.

Body class 80 ductile cast iron

Master Jaws hardened steel

Wedge hardened steel

Air Cylinder aluminum, o-ring sealed

Top Jaws located on hardened steel pins in master jaws & secured by socket head cap screws

Weight

with aluminum jaws: 14 lbs. (6.36 kg)

with steel jaws: 19 lbs. (8.64 kg)

Max. Recommended RPM 3000

Max. Opening of Jaws .250" (6.35 mm) on diameter

Force per Jaw variable to 1482 lbs. (674 kg)

Repeatability

concentricity—.0001 (2.5μ) T.I.R. max

end lengths—.0001 (2.5μ) T.I.R. max

Also available with .000025"

(25 millionths) (.64μ) repeatability

Master Jaws move at perfect right angle to ϕ of spindle

MODEL 675THR

6 Inch • 2 Jaw (.250" opening)
 (150mm) (6.35mm opening)
1" (25.48mm) Through Hole Rotating

Model 675THR Air Chuck comes with one set of #AL-2-6-1½ aluminum top jaws.

Body class 80 ductile cast iron

Master Jaws hardened steel

Wedge hardened steel

Air Cylinder aluminum, o-ring sealed

Top Jaws located on hardened steel pins in master jaws & secured by socket head cap screws

Weight

with aluminum jaws: 14 lbs. (6.36 kg)

with steel jaws: 19 lbs. (8.64 kg)

Max. Recommended RPM 3000

Max. Opening of Jaws .250" (6.35 mm) on diameter

Force per Jaw variable to 1482 lbs. (674 kg)

Repeatability

concentricity—.0001 (2.5μ) T.I.R. max

end lengths—.0001 (2.5μ) T.I.R. max

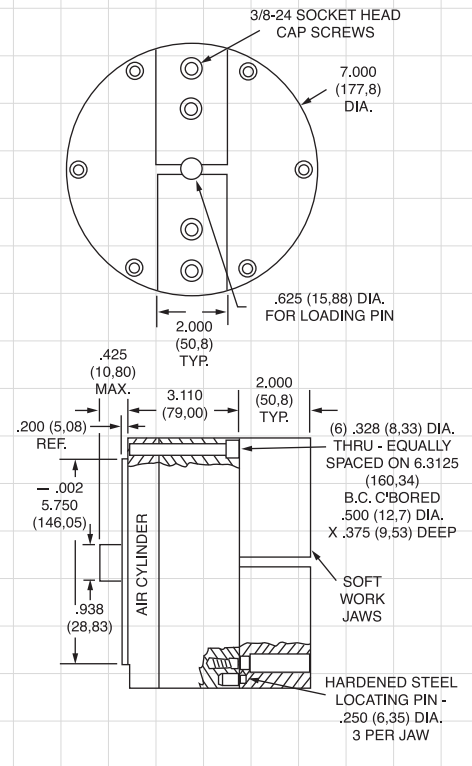
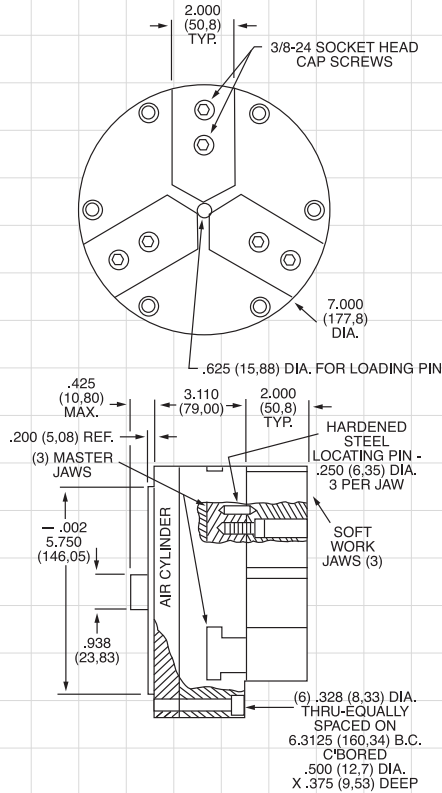
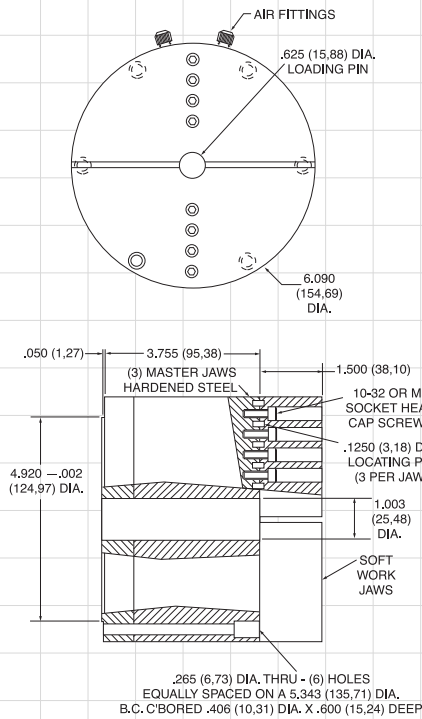
Also available with .000025"

(25 millionths) (.64μ) repeatability

Master Jaws move at perfect right angle to ϕ of spindle

Requires Rear Mounted Actuator

Precision Air Chucks Guarantee Accuracy within Millionths



MODEL

675THS

6 Inch • 2 Jaw (.250" opening)

(150mm) (6.35mm opening)

1" (25.48mm) Through Hole Stationary

Model 675THS Air Chuck comes with sideports, air hoses, valve and one set of #AL-2-6-1½ aluminum top jaws.

Body class 80 ductile cast iron

Master Jaws hardened steel

Wedge hardened steel

Air Cylinder aluminum, o-ring sealed

Top Jaws located on hardened steel pins in master jaws & secured by socket head cap screws

Weight

with aluminum jaws: 14 lbs. (6.36 kg)

with steel jaws: 19 lbs. (8.64 kg)

Max. Opening of Jaws .250" (6.35 mm) on diameter

Force per Jaw variable to 1482 lbs. (674 kg)

Repeatability

concentricity—.0001 (2.5μ) T.I.R. max

end lengths—.0001 (2.5μ) T.I.R. max

Also available with .000025"

(25 millionths) (.64μ) repeatability

Master Jaws move at perfect right angle to ϕ of spindle

MODEL

700

7 Inch • 3 Jaw (.100" opening)

(178mm) (2.5mm opening)

Model 700 Air Chuck comes complete including air tube assembly and one set of #AL-1-7-2 aluminum top jaws.

Body class 80 ductile cast iron

Master Jaws hardened steel

Wedge hardened steel

Air Cylinder aluminum & stainless steel, o-ring sealed

Top Jaws located on hardened steel pins in master jaws

& secured by socket head cap screws

Weight

with aluminum jaws: 32½ lbs. (14.66 kg)

with steel jaws: 39¾ lbs. (18.07 kg)

Max. Recommended RPM 3000

Max. Opening of Jaws .100" (2.5mm) on diameter

Force per Jaw variable to 1667 lbs. (758 kg)

Repeatability

concentricity—.0001 (2.5μ) T.I.R. max

end lengths—.0001 (2.5μ) T.I.R. max

Also available with .000025"

(25 millionths) (.64μ) repeatability

Master Jaws move at perfect right angle to ϕ of spindle

MODEL

770

7 Inch • 2 Jaw (.100" opening)

(178mm) (2.5mm opening)

Model 770 Air Chuck comes complete including air tube assembly and one set of #AL-1-7-2 aluminum top jaws.

Body class 80 ductile cast iron

Master Jaws hardened steel

Wedge hardened steel

Air Cylinder aluminum & stainless steel, o-ring sealed

Top Jaws jig bored & located on hardened steel pins in

master jaws & secured by socket head cap screws

Weight

with aluminum jaws: 30¾ lbs. (13.75 kg)

with steel jaws: 35½ lbs. (16.14 kg)

Max. Recommended RPM 3000

Max. Opening of Jaws .100" (2.5mm) on diameter

Force per Jaw variable to 2500 lbs. (1136 kg)

Repeatability

concentricity—.0005 (12.7μ) T.I.R. max

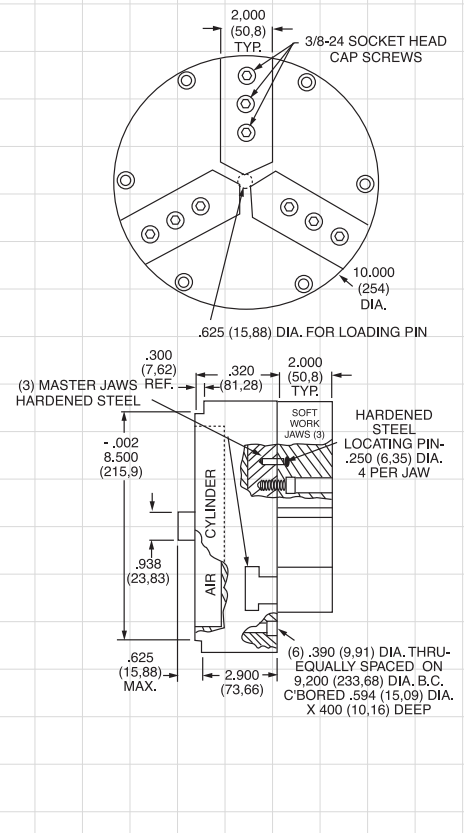
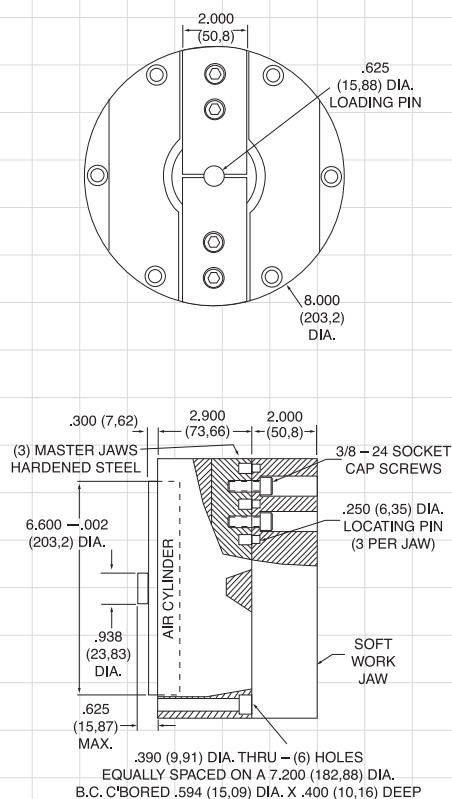
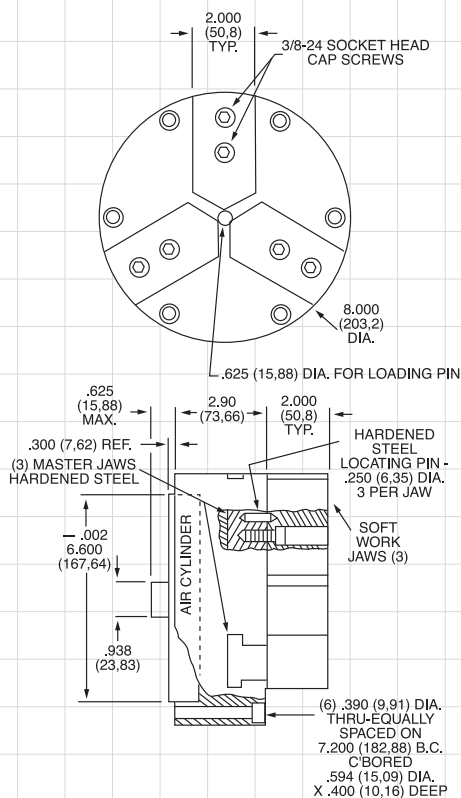
end lengths—.0005 (12.7μ) T.I.R. max

Also available with .000025"

(25 millionths) (.64μ) repeatability

Master Jaws move at perfect right angle to ϕ of spindle

NORTHFIELD



MODEL 800

8 Inch • 3 Jaw (.100" opening)
(203mm) (2.5mm opening)

Model 800 Air Chuck comes complete including air tube assembly and one set of #AL-1-8-2 aluminum top jaws.

Body class 80 ductile cast iron

Master Jaws hardened steel

Wedge hardened steel

Air Cylinder aluminum & stainless steel, o-ring sealed, incorporated into the chuck body

Top Jaws located on hardened steel pins in master jaws & secured by socket head cap screws

Weight

with aluminum jaws: 38 lbs. (17.27 kg)

with steel jaws: 47 lbs. (21.36 kg)

Max. Recommended RPM 2300 with AL:1-8-2

Max. Opening of Jaws .100" (2.5mm) on diameter

Force per Jaw variable to 1667 lbs. (758 kg)

Repeatability

concentricity—.0001 (2.5μ) T.I.R. max

end lengths—.0001 (2.5μ) T.I.R. max

Also available with .000025"

(25 millionths) (.64μ) repeatability

Master Jaws move at perfect right angle to ϕ of spindle

MODEL 870

8 Inch • 2 Jaw (.100" opening)
(203mm) (2.5mm opening)

Model 870 Air Chuck comes complete including air tube assembly and one set of #AL-1-8-2 aluminum top jaws.

Body class 80 ductile cast iron

Master Jaws hardened steel

Wedge hardened steel

Air Cylinder aluminum, o-ring sealed

Top Jaws located on hardened steel pins in master jaws & secured by socket head cap screws

Weight

with aluminum jaws: 36 lbs. (16.36 kg)

with steel jaws: 45 lbs. (20.45 kg)

Max. Recommended RPM 2300 with AL:1-8-2

Max. Opening of Jaws .100" (2.5mm) on diameter

Force per Jaw variable to 2500 lbs. (1136 kg)

Repeatability

concentricity—.0001 (2.5μ) T.I.R. max

end lengths—.0001 (2.5μ) T.I.R. max

Also available with .000025"

(25 millionths) (.64μ) repeatability

Master Jaws move at perfect right angle to ϕ of spindle

MODEL 1000

10 Inch • 3 Jaw (.100" opening)
(254mm) (2.5mm opening)

Model 1000 Air Chuck comes complete including air tube assembly and one set of #AL-1-10-2 aluminum top jaws.

Body class 80 ductile cast iron

Master Jaws hardened steel

Wedge hardened steel

Air Cylinder aluminum and stainless steel, o-ring sealed, incorporated into the body

Top Jaws located on hardened steel pins in master jaws & secured by socket head cap screws

Weight

with aluminum jaws: 60 lbs. (27.27 kg)

with steel jaws: 70 lbs. (31.82 kg)

Max. Recommended RPM 2000 with AL:1-10-2

Max. Opening of Jaws .100" (2.5mm) on diameter

Force per Jaw variable to 2660 lbs. (1206 kg)

Repeatability

concentricity—.0001 (2.5μ) T.I.R. max

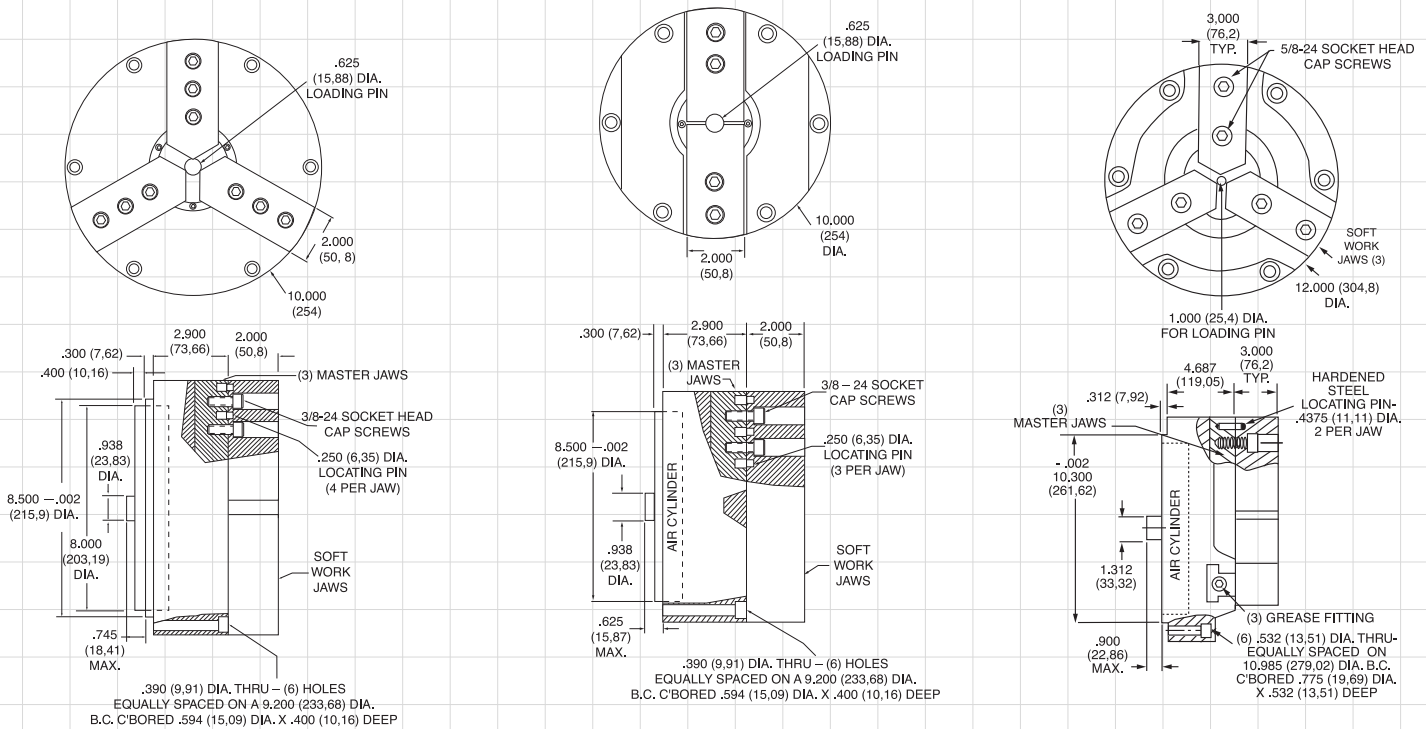
end lengths—.0001 (2.5μ) T.I.R. max

Also available with .000025"

(25 millionths) (.64μ) repeatability

Master Jaws move at perfect right angle to ϕ of spindle

Precision Air Chucks Guarantee Accuracy within Millionths



MODEL 1025

10 Inch • 3 Jaw (.250" opening)
(254mm) (6.35mm opening)

Model 1025 Air Chuck comes complete including air tube assembly and one set of #AL-1-10-2 aluminum top jaws.

Body class 80 ductile cast iron

Master Jaws hardened steel

Wedge hardened steel

Air Cylinder aluminum, o-ring sealed

Top Jaws located on hardened steel pins in master jaws & secured by socket head cap screws

Weight

with aluminum jaws: 60 lbs. (27.27 kg)

with steel jaws: 70 lbs. (31.82 kg)

Max. Recommended RPM 2000

Max. Opening of Jaws .250" (6.35 mm) on diameter

Force per Jaw variable to 2658 lbs. (1208 kg)

Repeatability

concentricity—.0001 (2.5μ) T.I.R. max

end lengths—.0001 (2.5μ) T.I.R. max

Also available with .000025"

(25 millionths) (.64μ) repeatability

Master Jaws move at perfect right angle to ϕ of spindle

MODEL 1070

10 Inch • 2 Jaw (.100" opening)
(254mm) (2.5mm opening)

Model 1070 Air Chuck comes complete including air tube assembly and one set of #AL-2-10-2 aluminum top jaws.

Body class 80 ductile cast iron

Master Jaws hardened steel

Wedge hardened steel

Air Cylinder aluminum, o-ring sealed

Top Jaws located on hardened steel pins in master jaws & secured by socket head cap screws

Weight

with aluminum jaws: 60 lbs. (27.27 kg)

with steel jaws: 70 lbs. (31.82 kg)

Max. Recommended RPM 2000

Max. Opening of Jaws .100" (2.5 mm) on diameter

Force per Jaw variable to 3990 lbs. (1810 kg)

Repeatability

concentricity—.0001 (2.5μ) T.I.R. max

end lengths—.0001 (2.5μ) T.I.R. max

Master Jaws move at perfect right angle to ϕ of spindle

MODEL 1200

12 Inch • 3 Jaw (.100" opening)
(305mm) (2.5mm opening)

Model 1200 Air Chuck comes complete including air tube assembly and one set of #AL-1-12-3 aluminum top jaws.

Body class 80 ductile cast iron

Master Jaws hardened steel

Wedge hardened steel

Air Cylinder aluminum and stainless steel, o-ring sealed, incorporated into the chuck body

Top Jaws jig bored & located on hardened steel pins in master jaws & secured by socket head cap screws

Weight

with aluminum jaws: 100 lbs. (45.45 kg)

with steel jaws: 123 lbs. (55.91 kg)

Max. Recommended RPM 1600

Max. Opening of Jaws .375" (9.53mm) on diameter

Force per Jaw variable to 3143 lbs. (1429 kg)

Repeatability

concentricity—.0001 (2.5μ) T.I.R. max

end lengths—.0001 (2.5μ) T.I.R. max

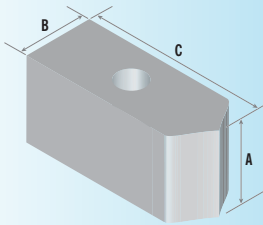
Also available with .000025"

(25 millionths) (.64μ) repeatability

Master Jaws move at perfect right angle to ϕ of spindle

SERIES 300

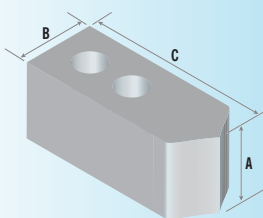
Standard Jaws for Series 300 Chucks



Material	Order by Jaw Number	Jaw Dimensions Inches (mm)			Chuck Range	
		A	B	C	External Inches (mm)	Internal Inches (mm)
ALUMINUM	AL-1-3-¾	¾ (19,05)	.750 (19,05)	1.453 (36,91)	.094-2.830 (2,39-71,88)	.250-2.830 (6,35-71,88)
ALUMINUM	AL-1-3-1	1.0 (25,40)				
ALUMINUM	AL-1-3-1½	1½ (38,10)				
MILD STEEL	ST-1-3-¾	¾ (19,05)				
MILD STEEL	ST-1-3-1	1.0 (25,40)				
MILD STEEL	ST-1-3-1½	ST-1-3-1½				
MILD STEEL	ST-1-3-2	2.0 (50,80)				

SERIES 400

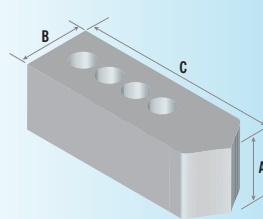
Standard Jaws for Series 400 Chucks



Material	Order by Jaw Number	Jaw Dimensions Inches (mm)			Chuck Range	
		A	B	C	External Inches (mm)	Internal Inches (mm)
ALUMINUM	AL-1-4-¾	¾ (19,05)	.750 (19,05)	1.895 (48,13)	.130-3.750 (3,30-95,25)	.250-3.750 (6,35-95,25)
ALUMINUM	AL-1-4-1½	1½ (38,10)				
ALUMINUM	AL-1-4-3	3.0 (76,20)				
MILD STEEL	ST-1-4-¾	¾ (19,05)				
MILD STEEL	ST-1-4-1½	1½ (38,10)				
MILD STEEL	ST-1-4-2	2.0 (50,80)				
MILD STEEL	ST-1-4-3	3.0 (76,20)				

SERIES 600

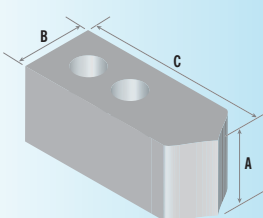
Standard Jaws for Series 600 Chucks



Material	Order by Jaw Number	Jaw Dimensions Inches (mm)			Chuck Range	
		A	B	C	External Inches (mm)	Internal Inches (mm)
ALUMINUM	AL-1-6-1	1.0 (25,40)	1.0 (25,40)	2.895 (73,53)	.130-5.750 (3,30-146,05)	.250-5.750 (6,35-146,05)
ALUMINUM	AL-1-6-1½	1½ (38,10)				
ALUMINUM	AL-1-6-3	3.0 (76,20)				
MILD STEEL	ST-1-6-1	1.0 (25,40)				
MILD STEEL	ST-1-6-1½	1½ (38,10)				
MILD STEEL	ST-1-6-2	2.0 (50,80)				
MILD STEEL	ST-1-6-3	3.0 (76,20)				

SERIES 700

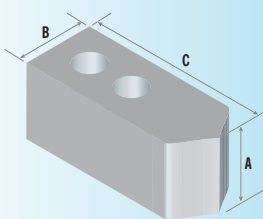
Standard Jaws for Series 700 Chucks



Material	Order by Jaw Number	Jaw Dimensions Inches (mm)			Chuck Range	
		A	B	C	External Inches (mm)	Internal Inches (mm)
ALUMINUM	AL-1-7-2	2.0 (50,80)	2.0 (50,80)	3.187 (80,95)	.750-6.750 (19,05-171,45)	1.00-6.750 (25,40-171,45)
ALUMINUM	AL-1-7-3	3.0 (76,20)				
ALUMINUM	AL-1-7-4	4.0 (101,60)				
MILD STEEL	ST-1-7-2	2.0 (50,80)				
MILD STEEL	ST-1-7-3	3.0 (76,20)				
MILD STEEL	ST-1-7-4	4.0 (101,60)				

SERIES 800

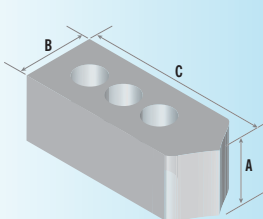
Standard Jaws for Series 800 Chucks



Material	Order by Jaw Number	Jaw Dimensions Inches (mm)			Chuck Range	
		A	B	C	External Inches (mm)	Internal Inches (mm)
ALUMINUM	AL-1-8-2	2.0 (50,80)	2.0 (50,80)	3.687 (93,65)	.750-7.750 (19,05-196,85)	1.00-7.750 (25,40-196,85)
ALUMINUM	AL-1-8-3	3.0 (76,20)				
ALUMINUM	AL-1-8-4	4.0 (101,60)				
MILD STEEL	ST-1-8-2	2.0 (50,80)				
MILD STEEL	ST-1-8-3	3.0 (76,20)				
MILD STEEL	ST-1-7-4	4.0 (101,60)				

SERIES 1000

Standard Jaws for Series 1000 Chucks

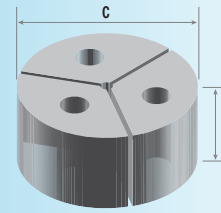


Material	Order by Jaw Number	Jaw Dimensions Inches (mm)			Chuck Range	
		A	B	C	External Inches (mm)	Internal Inches (mm)
ALUMINUM	AL-1-10-2	2.0 (50,80)	2.0 (50,80)	4.687 (119,05)	.750-9.750 (19,05-247,65)	1.00-9.750 (25,40-247,65)
ALUMINUM	AL-1-10-3	3.0 (76,20)				
ALUMINUM	AL-1-10-4	4.0 (101,60)				
MILD STEEL	ST-1-10-2	2.0 (50,80)				
MILD STEEL	ST-1-10-3	3.0 (76,20)				
MILD STEEL	ST-1-10-4	4.0 (101,60)				

Note – Special height, pointed, and over-size diameter jaws are available in all sizes.

Material	Order by Jaw Number	Jaw Dimensions Inches (mm)		Chuckling Range	
		A	C	External Inches (mm)	Internal Inches (mm)
ALUMINUM	AL-3-3-¾	¾ (19,05)	3.0 (76,20)	.130-2.830 (3,30-71,88)	.250-2.830 (6,35-71,88)
ALUMINUM	AL-3-3-1½	1½ (38,10)			
MILD STEEL	ST-3-3-¾	¾ (19,05)			
MILD STEEL	ST-3-3-1½	1½ (38,10)			
MILD STEEL	ST-3-3-2	2.0 (50,80)			

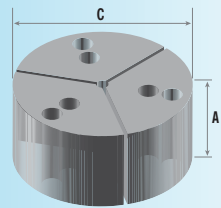
Full Circle Jaws for Series 300 Chucks



SERIES 300

Material	Order by Jaw Number	Jaw Dimensions Inches (mm)		Chuckling Range	
		A	C	External Inches (mm)	Internal Inches (mm)
ALUMINUM	AL-3-4-1	1.0 (25,40)	3.920 (99,57)	.750-3.750 (19,05-95,25)	.750-3.750 (19,05-95,25)
ALUMINUM	AL-3-4-2	2.0 (50,80)			
ALUMINUM	AL-3-4-3	3.0 (76,20)			
MILD STEEL	ST-3-4-¾	¾ (19,05)			
MILD STEEL	ST-3-4-1½	1½ (38,10)			
MILD STEEL	ST-3-4-2	2.0 (50,80)			
MILD STEEL	ST-3-4-3	3.0 (76,20)			

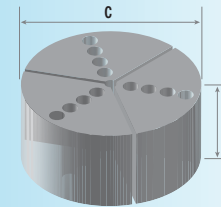
Full Circle Jaws for Series 400 Chucks



SERIES 400

Material	Order by Jaw Number	Jaw Dimensions Inches (mm)		Chuckling Range	
		A	C	External Inches (mm)	Internal Inches (mm)
ALUMINUM	AL-3-6-1	1.0 (25,40)	5.920 (150,37)	.750-5.750 (19,05-146,05)	.750-5.750 (19,05-146,05)
ALUMINUM	AL-3-6-2	2.0 (50,80)			
ALUMINUM	AL-3-6-3	3.0 (76,20)			
MILD STEEL	ST-3-6-¾	¾ (19,05)			
MILD STEEL	ST-3-6-1½	1½ (38,10)			
MILD STEEL	ST-3-6-2	2.0 (50,80)			
MILD STEEL	ST-3-6-3	3.0 (76,20)			

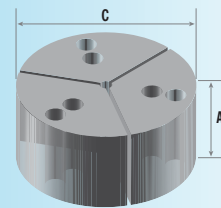
Full Circle Jaws for Series 600 Chucks



SERIES 600

Material	Order by Jaw Number	Jaw Dimensions Inches (mm)		Chuckling Range	
		A	C	External Inches (mm)	Internal Inches (mm)
ALUMINUM	AL-3-7-2	2.0 (50,80)	7.0 (177,80)	.750-6.750 (19,05-171,45)	1.00-6.750 (25,40-171,45)
ALUMINUM	AL-3-7-3	3.0 (76,20)			
ALUMINUM	AL-3-7-4	4.0 (101,60)			
MILD STEEL	ST-3-7-2	2.0 (50,80)			
MILD STEEL	ST-3-7-3	3.0 (76,20)			
MILD STEEL	ST-3-7-4	4.0 (101,60)			

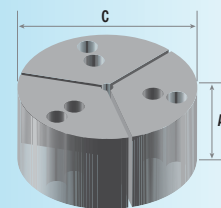
Full Circle Jaws for Series 700 Chucks



SERIES 700

Material	Order by Jaw Number	Jaw Dimensions Inches (mm)		Chuckling Range	
		A	C	External Inches (mm)	Internal Inches (mm)
ALUMINUM	AL-3-8-2	2.0 (50,80)	8.0 (203,20)	.750-7.750 (19,05-196,85)	1.00-7.750 (25,40-196,85)
ALUMINUM	AL-3-8-3	3.0 (76,20)			
ALUMINUM	AL-3-8-4	4.0 (101,60)			
MILD STEEL	ST-3-8-2	2.0 (50,80)			
MILD STEEL	ST-3-8-3	3.0 (76,20)			
MILD STEEL	ST-3-8-4	4.0 (101,60)			

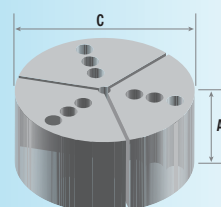
Full Circle Jaws for Series 800 Chucks



SERIES 800

Material	Order by Jaw Number	Jaw Dimensions Inches (mm)		Chuckling Range	
		A	C	External Inches (mm)	Internal Inches (mm)
ALUMINUM	AL-3-10-2	2.0 (50,80)	10.00 (254,0)	.750-9.750 (19,05-247,65)	1.00-9.750 (25,40-247,65)
ALUMINUM	AL-3-10-3	3.0 (76,20)			
ALUMINUM	AL-3-10-4	4.0 (101,60)			
MILD STEEL	ST-3-10-2	2.0 (50,80)			
MILD STEEL	ST-3-10-3	3.0 (76,20)			
MILD STEEL	ST-3-10-4	4.0 (101,60)			

Full Circle Jaws for Series 1000 Chucks



SERIES 1000

Note – Special height, pointed, and over-size diameter jaws are available in all sizes.

WARRANTY

Northfield Precision Instrument Corp. warrants its Air Chucks and appurtenances thereto to be free from defective material and workmanship. The chucks are guaranteed to perform as represented herein provided all installation instructions have been followed and chuck is mounted and prepared properly. This guarantee will prevail for a period of 90 days from date of delivery during which time Northfield will repair or replace any defective parts at no cost to purchaser if the chuck is returned to the factory.

Northfield Precision Instrument Corp.
4400 Austin Blvd.
P.O. Box D
Island Park, NY 11558

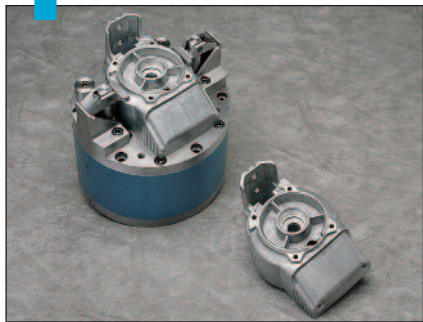
[516] 431.1112 **T**
[516] 431.1928 **F**

Precision Air Chucks

Northfield Precision works closely with a worldwide network of representatives and distributors to provide sales and service for the most accurate line of air chucks in the world. This network is supported by factory engineers, full documentation and a national advertising program.

In addition, Northfield is continually developing new products, custom designed to solve the most difficult workholding problems. Northfield supplies precision products to the automotive, aerospace, electrical/electronic, medical/optical, machine tool, plastics/ceramics and appliance industries.

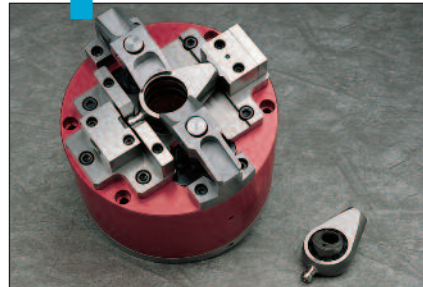
Pull-down fixture for high speed turning



Sealed chuck for lens grinding



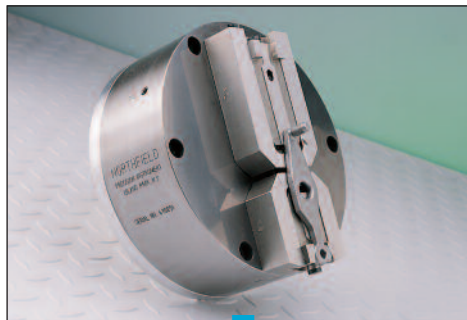
Swivel action pull-down fixture for hard turning



Draw-bar cam action pull-down chuck for hard turning



High-speed balancing chuck for CV joints



2-jaw offset chuck with dual locators



ID gripping chuck for OD turning

Northfield provides special accessories such as: automatic lubrication; air or spring ejectors; parts locators; coolant redirection; rubber covers; multiple chuck pallets; all metric chucks; quick-change top jaws. Northfield engineers provide custom workholding solutions for any part that may seem to be impossible to hold.

NORTHFIELD

PRECISION INSTRUMENT CORPORATION

4400 Austin Blvd., P.O. Box 550, Island Park, NY 11558-0550 • (516) 431-1112 • Fax: (516) 431-1928

Call Toll Free 1-800-810-2482

www.northfield.com • e-mail: sales@northfield.com